



GAT MONTHLY MEMBERSHIP PROGRESS REPORT

Results as of: 6/30/2023

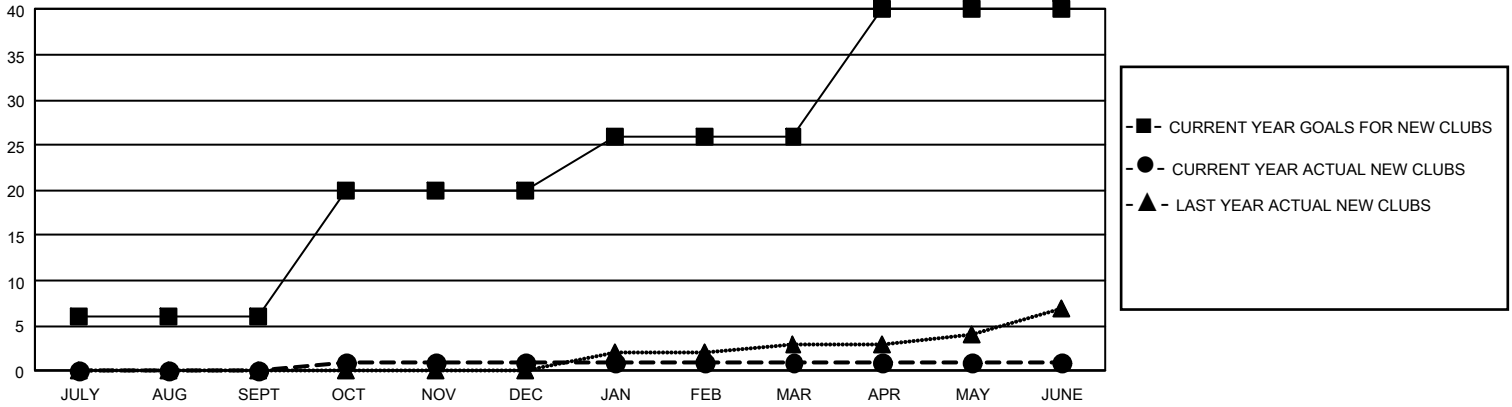
GMT Constitutional Area 1, Group I

REPORT DOES NOT INCLUDE CLUBS IN UNDISTRICTED AREAS.

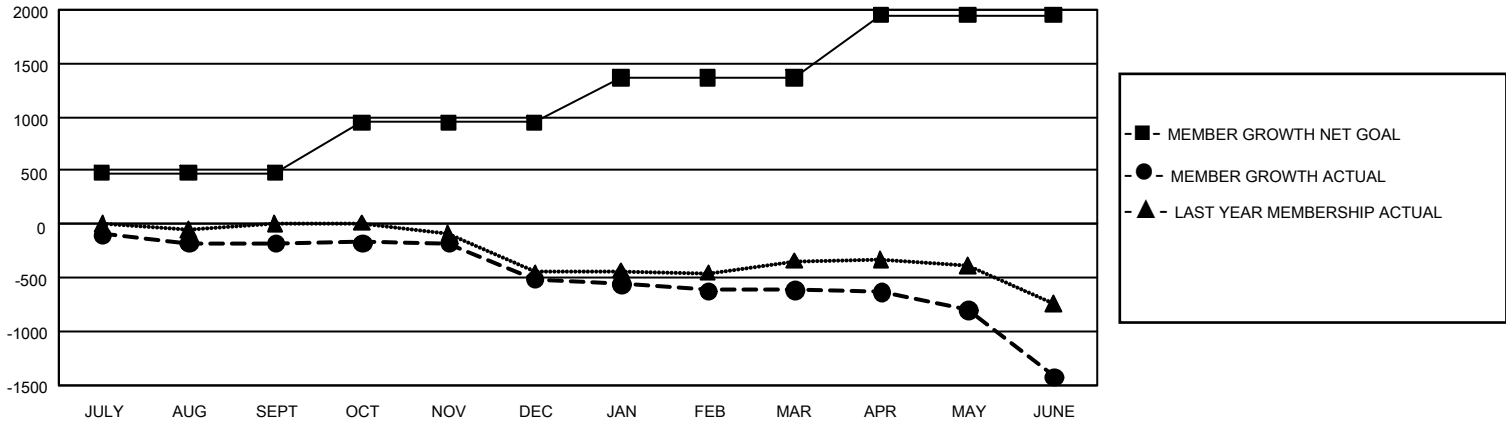
Clubs			
RESULTS FOR 2022-2023			
QUARTER	NEW CLUB GOAL	NEW CLUBS	DROPPED CLUBS
JULY/AUG/SEPT	18	0	6
OCT/NOV/DEC	42	1	11
JAN/FEB/MAR	18	0	8
APR/MAY/JUNE	42	0	16

Members			
RESULTS FOR 2022-2023			
QUARTER	MEMBER GROWTH NET GOAL	MEMBER GROWTH ACTUAL	DROPPED MEMBERS ACTUAL (including transfers)
JULY/AUG/SEPT	477	550	625
OCT/NOV/DEC	474	607	891
JAN/FEB/MAR	419	640	639
APR/MAY/JUNE	579	721	1,419

GOALS AND ACTUAL NEW CLUBS CUMULATIVE



GOALS AND ACTUAL MEMBERS CUMULATIVE



DROPPED CLUBS: 41	610 CLUBS OF 1,081 ADDED 1 OR MORE NEW MEMBERS	GENDER DISTRIBUTION	
		MALE 18,165 (67.34%) FEMALE 8,786 (32.57%) NON BINARY 1 (0.00%) PREFER NOT TO ANSWER 22 (0.08%)	
DROPPED MEMBERS		CLICK HERE FOR CUMULATIVE MEMBERSHIP DATA	TOTAL FAMILY UNIT MEMBERS 5,811
DECEASED 575 CLUB CANCELLED 212 OTHER 2,786 TOTAL 3,573	FAMILY MEMBERS PAYING HALF DUES 2,967		